

Infrastructure challenges in an ever evolving digital landscape

Chris Clark

Managing Director - Prosperity 24.7



Prosperity_{24.7}

AGENDA

- Global trends
- A common issue
- The opportunity for Guernsey
- The issues that exist today...

GLOBAL MEGATRENDS



70% of the world's population will live in urban areas by 2050



80% of Global GDP attributable to Cities



Cities consume up to 80% of the world's energy



Move to new ways of interacting with citizens

Technology Megatrends

An opportunity for Guernsey to innovate & prosper?



Mobility



Social



Cloud



Big data

Always on --
Consumers use
an average of **4 devices**
every day

**44% of complaints are
through social media**

90% companies using social
technologies that report **business
benefit** from them

70%

of organizations are either
using or investigating **cloud
computing solutions**

**World's information is
doubling every two years;
48 hours of youtube every
minute**

Guernsey is facing complex challenges



A large blue and white cargo ship is docked at a pier. A smaller boat is visible in the water to the right. The scene is set during sunset or sunrise, with a soft, hazy sky. The foreground shows a wet, reflective surface, possibly a tidal flat or a pool of water.

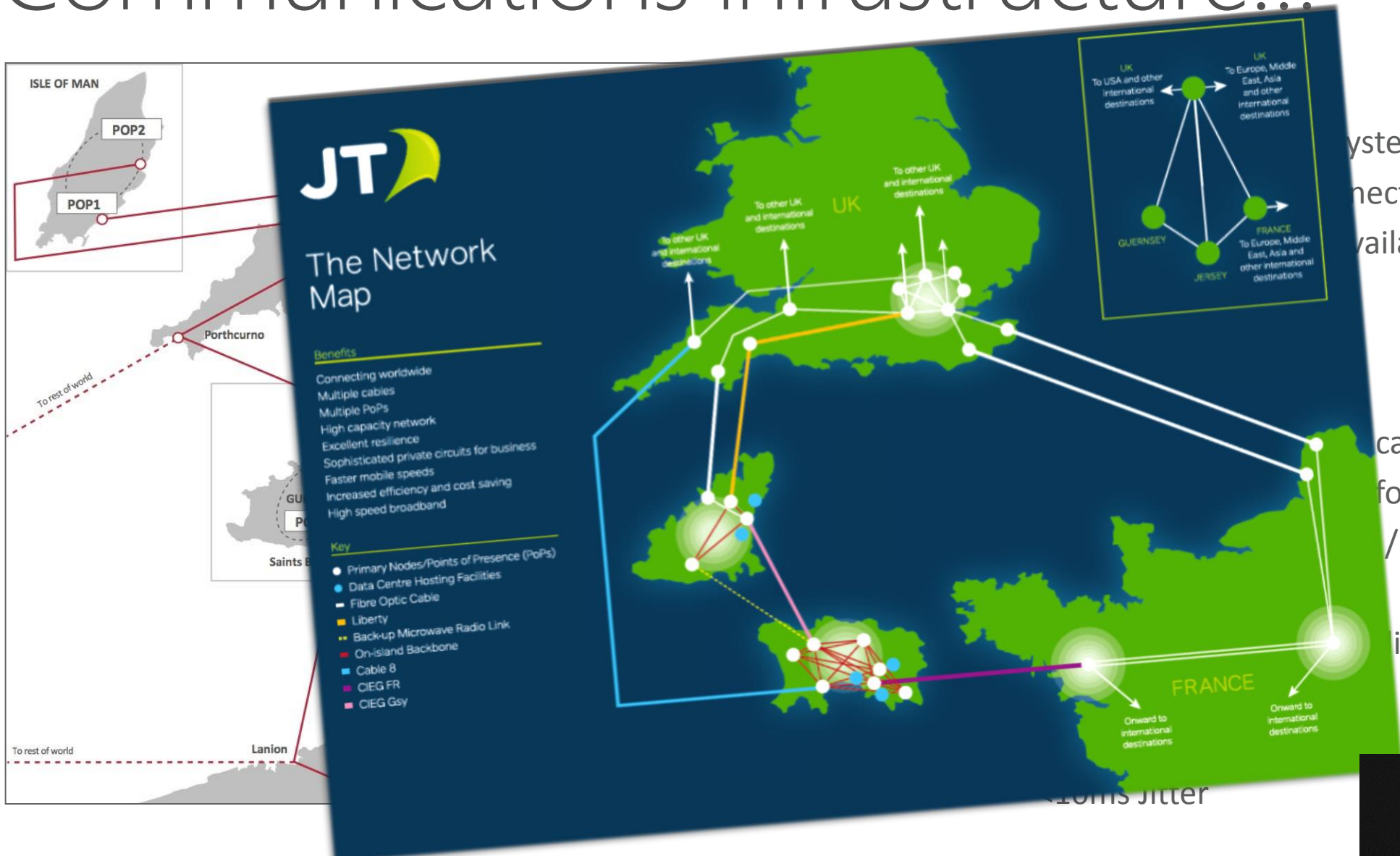
So...

How do we balance the
opportunity for innovation (reward)
versus the reality (risk)

Firstly...

Lets appreciate what you do have
in place today...

Communications infrastructure...



systems
connectivity
available

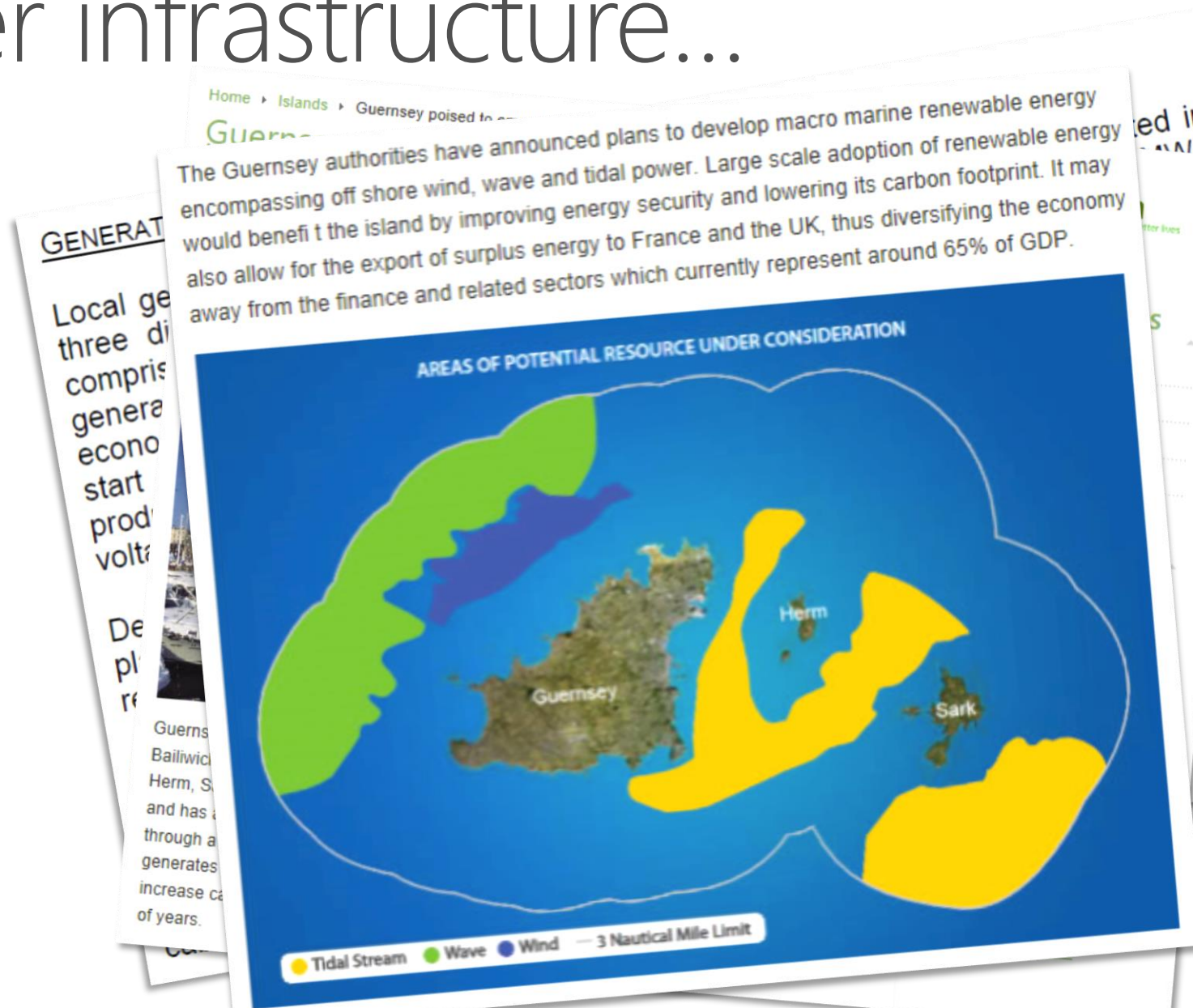


carriers' fibre backbones
four core PoP locations
/ key Internet Exchanges

ity

Prosperity_{24.7}

Power infrastructure...



- <http://www.cleantechinvestor.com/portal/islands/10643-guernseymay2012.html>

Prosperity^{24.7}

- <http://www.electricity.gg/publicinfo/statementofconnection/statementOfOpportunity/Executive%20summary.pdf>

Data Centres.

alderney
gambling.com

Search

Sure International Carey Group Collas Crill Fort Group ITEX (part of C5 Alliance Group) Long Port JT Guernsey Continent 8 Technologies

WHY ALDERNEY REGULATION LICENCE & FEES PARTNERS LATEST DIGI NEWS SIGN UP CONTACTS

STACK THE ODDS IN YOUR FAVOUR

**GDP GUERNSEY
DATA PARK**

www.long-port.com

Long Port Group

The Long Port Group is a dynamic, privately owned property development, regeneration and investment company based in St Peter Port, Guernsey, where it has been responsible for the sympathetic regeneration and redevelopment of several historically significant local sites and extensive UK brown field sites. It has an outstanding track record in groundbreaking projects and a long-standing reputation as one of the leading developers in the Channel Islands.

We believe in simple good service.

Don't gamble on your relocation, call us on +44 (0)1481 728 721.

Partners

LEGAL, FIDUCIARY, RELOCATION & CONSULTANCY
Carey Group, Collas Crill, Fort Group, Long Port

HOSTING, TELECOMMUNICATIONS & TECHNICAL
Sure International, ITEX (part of C5 Alliance Group),
JT Guernsey, Continent 8 Technologies

view our latest magazine online

download magazine

view our latest magazine online

download magazine

view our latest magazine online

download magazine

LOCATION & CONSULTANCY
Fort Group, Long Port

COMMUNICATIONS & TECHNICAL
(part of C5 Alliance Group),
8 Technologies

IP

Isle of Man, Guernsey, Jersey, Channel Islands, and other territories, regardless of geography.

Our services enable organisations to rapidly deploy to many different office or public front-end systems across the globe.

So... Wait a minute...

You have comms...

You have power...

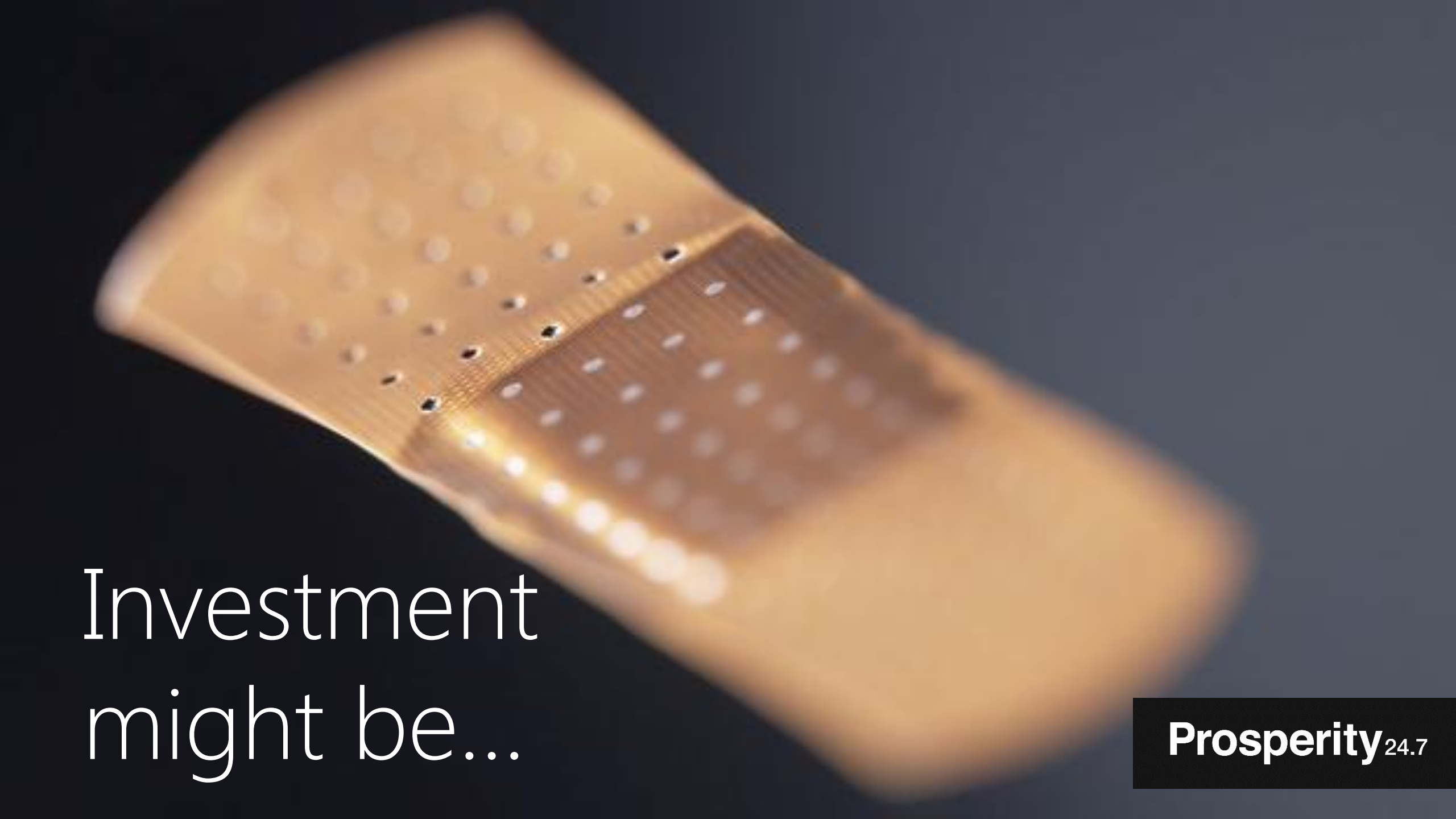
You have Data Centres...

So...

What is missing...?

Fibre is not the answer...

Prosperity_{24.7}



Investment
might be...

Prosperity_{24.7}

Investment... But where?

In your own businesses



People...



Workforce enablement (skills)...



Promotion on the World stage...



Thank you



Chris Clark



chris.clark@prosperity247.com



www.prosperity247.com



[@nomanualreqd](https://twitter.com/nomanualreqd)



+44 (0) 7797 736076 / +44 (0) 1534 877247



Prosperity_{24.7}